

宁波健实
JSM

高精密机加工制造商

A MACHINING MANUFACTURER with high-precision



宁波健实机械有限公司
NINGBO JIANSHI MACHINERY CO.,LTD.

愿景 VISION

成为高精密机加工零部件的全球一流企业
TO BECOME A WORLD CLASS MACHINING MANUFACTURER
WITH HIGH PRECISION

使命 MISSION

持续探索高精密机加工技术，
执工匠之心，解客户之需
PERSISTENTLY EXPLORE HIGH PRECISION MACHINING TECHNOLOGY
AND HOLD THE CRAFTSMAN HEART TO MEET THE CUSTOMER NEEDS

核心价值观 CORE VALUE

精益 高效 创新 学习
LEAN EFFICIENCY INNOVATION STUDY



目录

CONTENTS

I. 企业简介	1
BRIEF INTRODUCTION	
II. 高精密机加工产品	5
HIGH PRECISION PRODUCTS	
III. 技术研发&客户认可成果	6
R&D & CUSTOMER RECOGNITION	
IV. 产品测试中心	11
TEST CENTER	
V. 生产加工车间	12
PRODUCTION SHOPS	
VI. 生活环境	17
LIVING ENVIROMENT	
VII. 员工活动	18
EMPLOYEE ACTIVITIES	





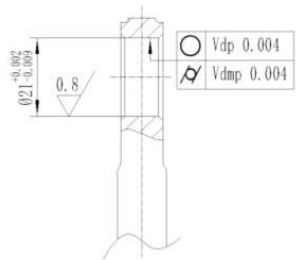
公司简介 COMPANY PROFILE

宁波健实机械有限公司，专注高精密机加工零部件二十余年，位于长三角崛起的千亿级产业新城-杭州湾新区，拥有完整的生产供应链和完善的配套产业。

Ningbo Jianshi Machinery Co., LTD., focusing on high-precision machining parts for more than 20 years, is located in Hangzhou Bay New Area, a hundred-billion-level industrial city rising in the Yangtze River Delta, with a complete production supply chain and perfect supporting industries.



20余年来，我们坚持客户至上、精益求精的理念，顺应不断变化的市场需求。秉持精益 高效 创新 学习的核心价值观，持续探索高精密机加工技术，执工匠之心，解客户之需。目前公司主要生产汽车零部件、锁具零部件、轴承零部件、机器零部件、船舶零部件、电机零部件、加油机零部件、高铁零部件、军工零部件等高精密零部件，应用于汽车、锁具、轴承、安防、船舶、电机、高铁、航天、军工等领域。目前我们的最高精度可达到7um的尺寸公差和4um的形位公差。为众多国内外世界知名企业服务，出口欧美等国家和地区。



For more than 20 years, adhering to the concept of customer first & pursuing excellence and adapting to the changing market demand. Upholding the core value of lean, efficiency, innovation and study, we persistently explore high precision machining technology and hold craftsman heart to meet the customer needs. We are currently mainly producing auto parts, lock parts, bearing parts, machine parts, marine parts, motor parts, refueling machine parts, high-speed rail parts, military parts and other high precision parts. Mainly used in automobiles, locks, bearings, securities, motors, refueling machines, high-speed rails, aerospaces, military and other fields. Presently the highest dimension tolerance we can reach is 7um and position tolerance is 4um. We provide services to many domestic and foreign world famous enterprises and export to Europe, the United States and other countries and regions.



AUTOMOBILE



LOCK



BEARING



MOTOR



HIGH-SPEED RAIL



MILITARY

面对激烈的市场竞争，我们坚持技术创新和自我变革，引进了中国、日本、美国相当数量的高精度加工中心、数控机床、磨床等一百多台世界一流的加工设备！

In the face of fierce market competition, we adhere to technological innovation and self-transformation and has introduced more than 100 sets world-class processing equipments like high-precision machining centers, CNC lathes, grinding machines etc. which are from domestic, Japan and the United States.



我们的毛坯均为外购，这就为我们找到最优化毛坯方案提供了多种选择。其中主要有精密铸造、砂铸、压铸、浇铸、锻压、挤压、冲压、粉末冶金、MIM、型材、管材、棒材等。

All of our blanks are outsourced, which gives us a variety of options to find the optimal blank solution. Among them are mainly precision casting, sand casting, die casting, gravity casting, forging, extrusion, stamping, powder metallurgy, MIM, profile, pipe, bar and so on.

我们的机加工工艺主要有车、铣、镗、磨、珩磨、绞、钻、攻牙、滚齿、拉孔，弯曲、装配等。我们能够加工符合各类国际国内材料标准的钢铁、不锈钢、铜、铝、锌、尼龙等多种材料。

Our machining technology mainly includes turning, milling, boring, grinding, honing, reaming, drilling, tapping, hobbing, broaching, bending, assembling and so on. We can process steel, stainless steel, copper, aluminum, zinc, nylon and other materials in line with all kinds of international and domestic material standards.



我们根据不同的材质、不同的硬度以及不同的精度要求选择常规刀具、定制刀具。运用独特的装夹方式和工艺设计保证尺寸和形位公差，满足各种高精密技术要求。

We choose conventional or custom cutting tools according to different materials, different hardness and different precision requirements. Using unique clamping method and process design to ensure the size and shape tolerance, we meet various high precision technical requirements.

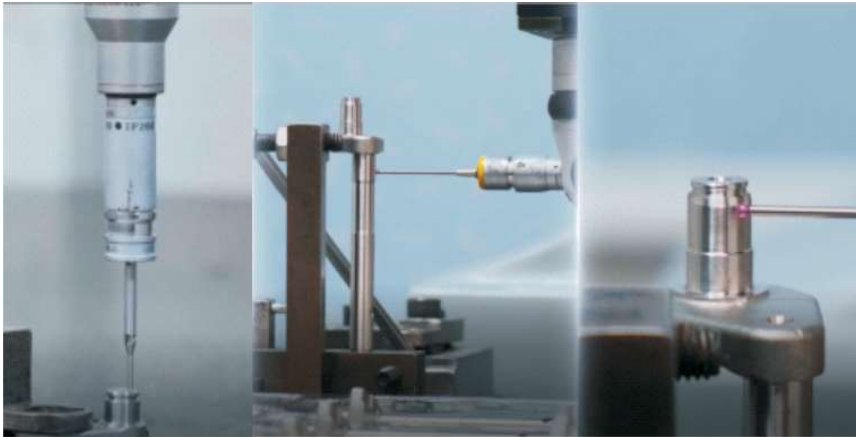
自动加工生产线，实现了产品自动夹取、安装、加工等功能，提高了企业的竞争力。

Automatic processing production lines help to achieve automatic product clamping, installation, processing and other functions and improve our competitiveness.



6S基础管理、生产现场呼叫系统、QRQC质量控制管理模式，形成了一套完善的质量检测管理体系。

6S management, production site call system and QRQC quality control management mode form a set of perfect quality detection management system.



我们拥有自己的工装模具加工中心，先进的工装模具设计能力,可以对客户需求进行快速反应和持续改善，并取得了多项国家发明和实用专利。

We have our own tooling processing center, advanced tooling design ability and can quickly respond to customer needs and continuous improvement. In this field, we have obtained a number of national invention and utility patents.



这些不仅保障了加工和定位的高精度，更建造出一个高配置，规模化、高效率的生产平台。

These not only ensure the high precision of processing and positioning, but also build a high configuration, large-scale, efficient production platform.

对每一件产品，健实都有严苛的品质标准，我们通过了IATF16949认证。先进的三坐标测量仪、轮廓仪、光谱仪等检测设备，确保了产品的稳定品质。

For each product, we have strict quality standards, we have passed the IATF16949 certification. Advanced testing equipments such as three-coordinate tester, profiler, spectrometer etc., ensure the stable quality of products.



这些不仅保障了加工和定位的高精度，更建造出一个高配置，规模化、高效率的生产平台。

Adopting informative, digital and standardized operation, relying on strict business process and project management, we carry out strict quality and cost monitoring of every link of the whole production process. Through this we improve the market competitiveness.



在不断创新与持续发展中，我们强调企业文化的建设和渗透。可口的饭菜、温馨的居所，良好的学习环境，增强了企业的凝聚力和向心力；积极参与社会公益事业，完善的气、尘处理环保设备，体现着环境保护的社会责任。

二十年的专注，成就了今天的辉煌。

未来，我们将以帮助用户解决加工难题，协助用户降低成本为最终追求，在高精密机加工行业深耕，助力中国制造，驶向全球一流高精密零部件企业之岸！

In the process of continuous innovation and sustainable development, we emphasize the construction and penetration of corporate culture. Delicious food, warm residence, good learning environment, enhance the cohesion and centripetal force of the enterprise; Active participation in social public welfare undertakings, perfect gas and dust treatment environmental protection equipment, reflects the social responsibility of environmental protection.

Twenty years of focusing achieve today's brilliance.

In the future, by helping our customers to solve machining problems and reducing costs as our ultimate pursuit.,we will deep plough in the high precision machining industry, offer power assistance to the Made in China and head for the shore of world class machining manufacturer with high precision.





技术研发&客户认可成果 >>>
R&D & CUSTOMER RECOGNITION



高精密机加工产品 >>>
HIGH PRECISION PRODUCTS



汽车零部件
AUTOMOBILE PARTS

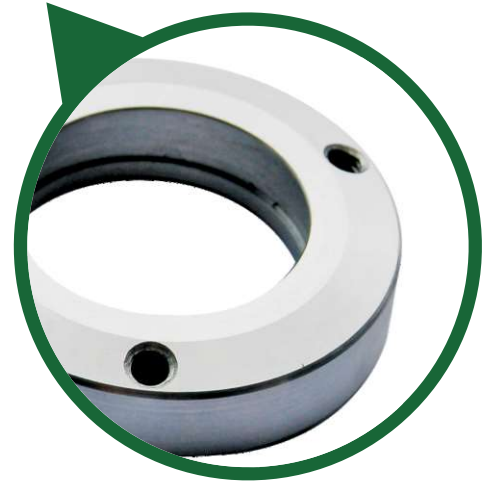


用于
APPLIED IN

- 发动机 ENGINE
- 变速箱 GEARBOX
- 油路系统 FUELING SYSTEM
- 排气系统 EXHAUST/INLET SYSTEM
- 车顶行李架 ROOF RACK
- 新能源车轮毂 CAR WHEEL

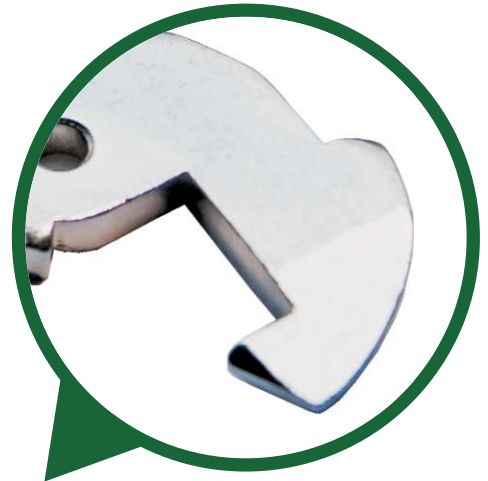


轴承零部件
BEARING PARTS



用于
APPLIED IN

- 轴承座 BEARING SEAT
- 轴承锁紧装置 BEARING LOCKING SYSTEM
- 轴承防尘装置 BEARING DUSTPROOF SYSTEM



锁具零部件
LOCK PARTS



用于
APPLIED IN

门锁
DOOR LOCK

窗户风扣系统
WINDOW WITHHOLDING SYSTEM



安防零部件
SECURITY PARTS



用于
APPLIED IN

工业防火系统
INDUSTRY FIRE PROTECTION





电机零部件
MOTOR PARTS



用于
APPLIED IN



工业电机外壳
INDUSTRY MOTOR SHELL
医疗电机外壳
MEDICAL MOTOR SHELL



产品测试中心 >>>
TEST CENTER

轮廓度仪
MITUTOYO FORMTRACER



硬度计
HARDNESS TESTER



光谱仪
SPECTOR SPECTROMETER



HEXAGON三坐标CMM



WENZEL三坐标CMM



投影仪
PROJECTOR

生产加工车间 >>>
PRODUCTION SHOPS

CNC铣削滚齿车间
CNC MILLING/HONNING SHOP



加工中心
HAAS VF2 MACHINING CENTER



加工中心
BROTHER S700 MACHINING CENTER



滚丝机
HONNING MACHINE



CNC车磨钻拉车间

CNC TURNING/GRINDING/DRILLING/BROACHING SHOP

数控车床
CNC LATHE



无心磨床
CENTERLESS GRINDING MACHINE



平面磨床
SURFACE GRINDING MACHINE



拉床
BROACHING MACHINE

工装模具车间 TOOLING SHOP



线切割
WIRE CUTTING MACHINE



冲压铆压车间 STAMPING/RIVETTING SHOP



铆接机
OFFSET RIVETTING MACHINE



冲床
STAMPING PRESS



自动送料装置
AUTOMATIC FEEDING MACHINE

检验包装车间 INSPECTION SHOP



LIVING ENVIRONMENT

生活环境

WARM DEPARTMENT
温馨公寓



DINNING ROOM
宽敞食堂



TRAINING ROOM
多功能厅



EMPLOYEE ACTIVITIES

员工活动

OUTDOOR TRAINING
拓展训练



旅游 TRAVEL



DINING TOGETHER
聚餐



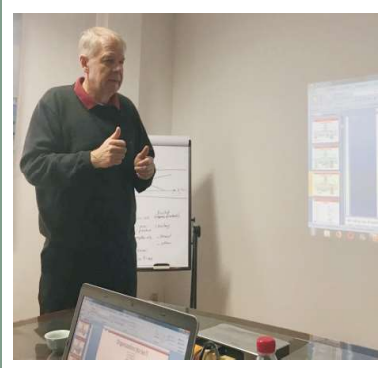
INTERNAL TRAINING
企业内训



ABROAD TRAINING
国外培训



EXPERT TRAINING
专家培训





健实机械

王维俊 销售副总
Weijun Wang Sales VP

EUROPE OFFICE

胡逸阳 销售经理
Yiyang Hu Sales Manager

宁波健实机械有限公司
NINGBO JIANSI MACHINERY CO.,LTD.

地址/Add: 中国·浙江省·慈溪市·崇寿工业园区·崇寿西大道138号
138 Chongshou West Road, Chongshou Industrial Zone,
Cixi City, Zhejiang Province, China

电话/TEL: +86 574 63296968

传真/FAX: +86 574 63293583

手机/MP: +86 13586570924 (微信同号/Wechat same)

邮箱/EMAIL: annie.wang@dfmach.com

网址/Website: www.dfmach.com



宁波健实机械有限公司·欧洲办事处
NINGBO JIANSI MACHINERY CO.,LTD.

地址/Add: 中国·浙江省·慈溪市·崇寿工业园区·崇寿西大道138号
Flat 13 Westrova Court, 5 Moreton Street SW1V
2PW, London, UK

邮箱/EMAIL: yiyang.hu997@gmail.com

WhatsApp: +44 7553345880

网址/Website: www.dfmach.com

